

Sensory guide



Sensory guide to the Solomos Museum for visitors on the autism spectrum



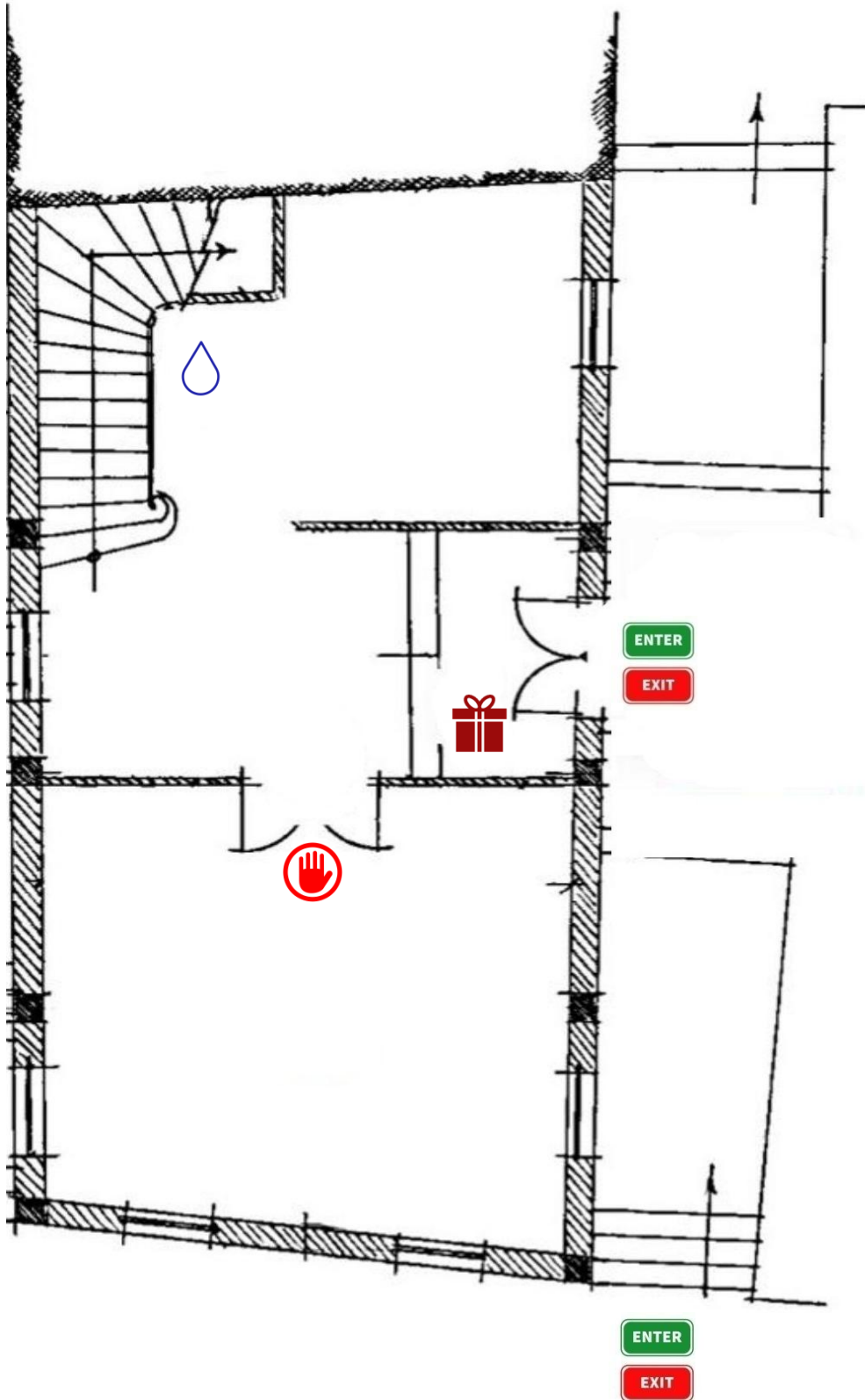
The sensory guide to the Solomos Museum for visitors on the autism spectrum was created by the GAS Group (Guides to cultural sites for visitors on the Autism Spectrum) Department of Archives, Library Science and Museology Ionian University, in collaboration with the Solomos Museum of Corfu.





There are rules in the Museum:

- ✓ I look at the monuments from a distance without touching.
This way everything is safe.
- ✓ During the visit I stay close to those who accompany me.
- ✓ I walk slowly and I am careful with my movements.
- ✓ I speak in a low voice. I can also use my inner voice.

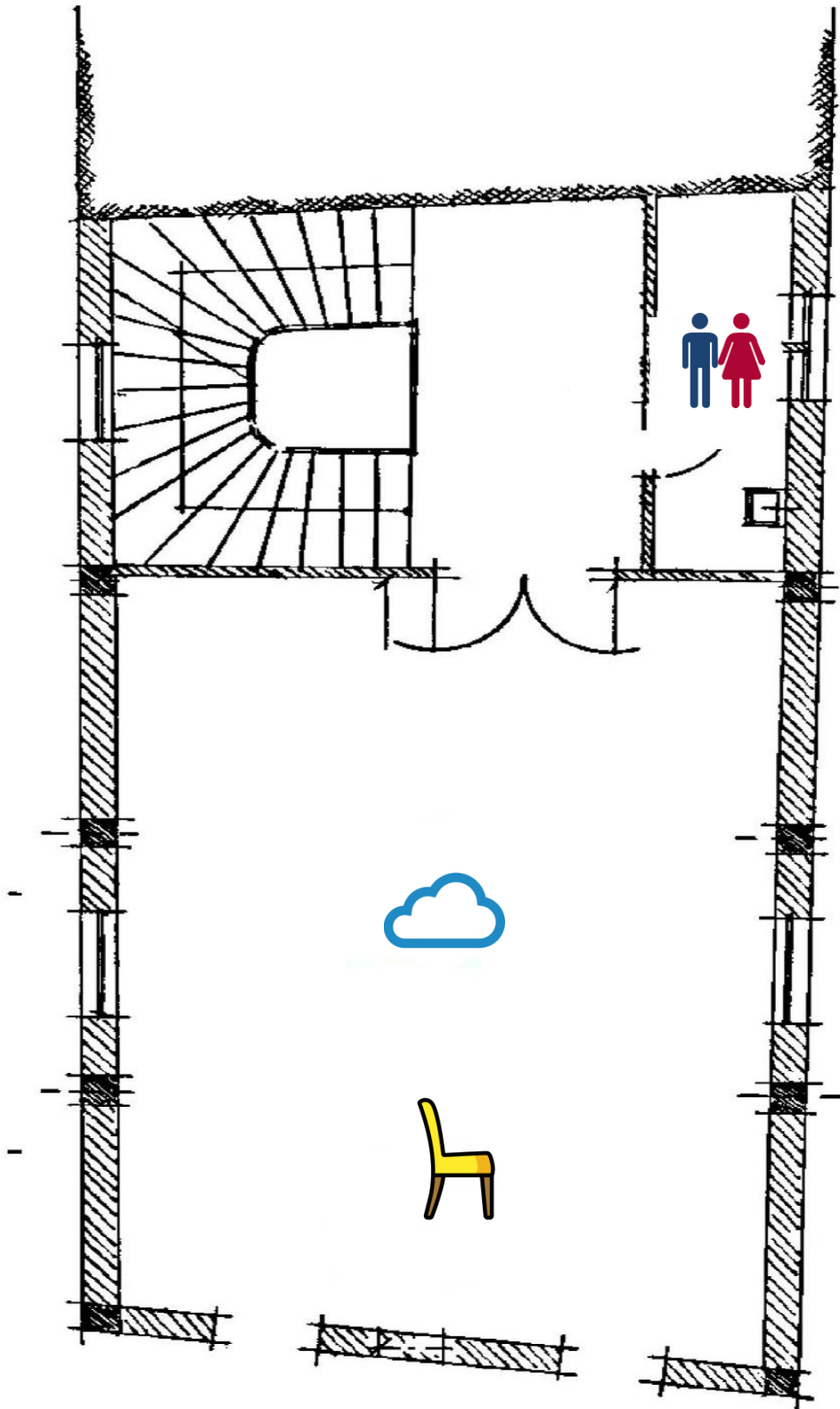
I remember the rules so everyone is happy!




Ground floor



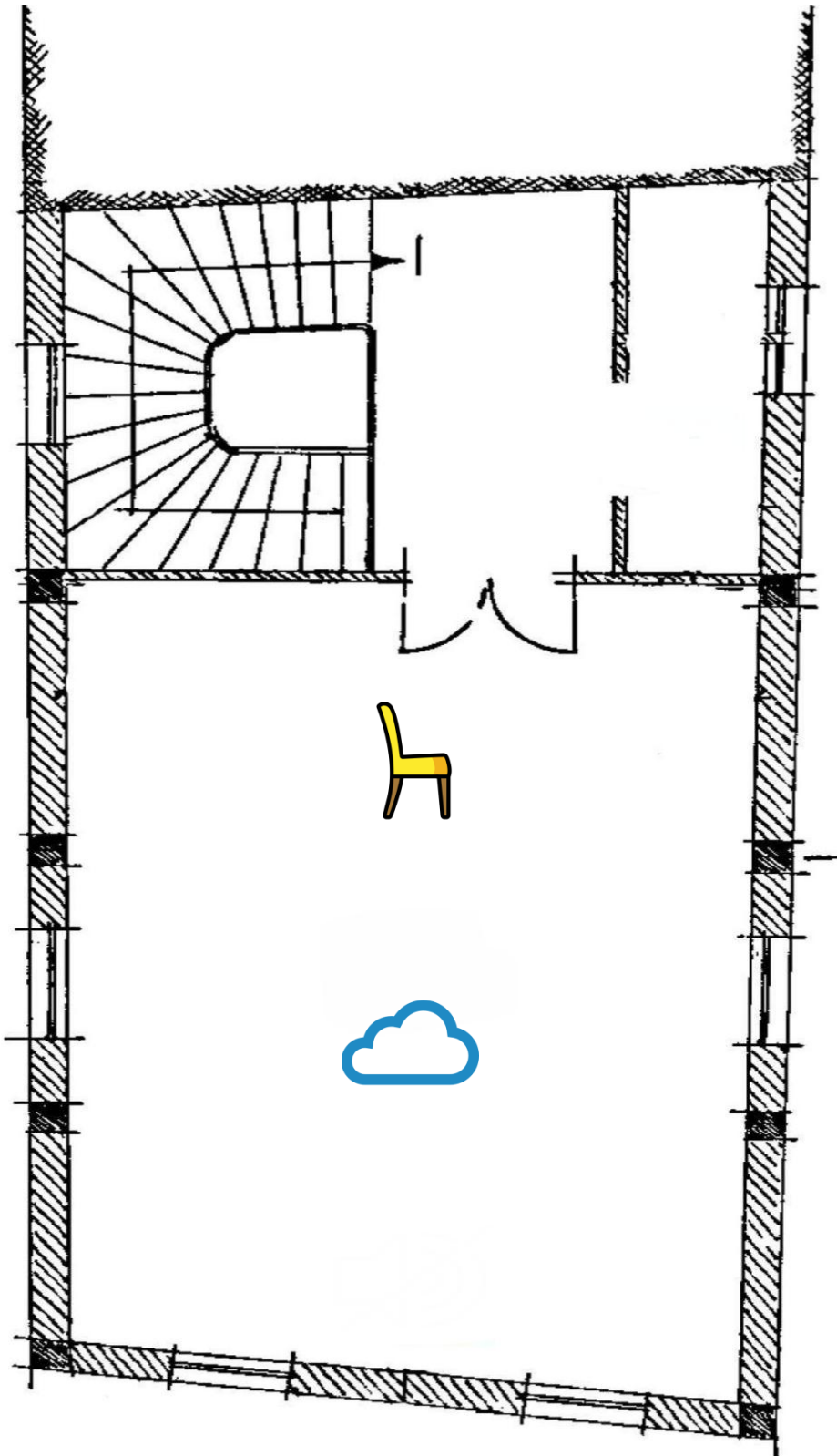
	Entrance and exit from the museum area
	Gift shop
	Entry is not allowed
	Drinking water



1st floor



	Toilets
	Low sensory area
	Rest area

2nd floor



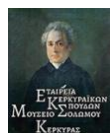
	Rest area
	Low sensory area



Sensory-GAS

Guides to cultural sites for visitors on the Autism Spectrum

Copyright Ομάδα GAS (2025). *Sensory guide to the Solomos Museum for visitors on the autism spectrum*. Version 3.5. First edition 2024.



GAS Group: Theodora Korovilou Msc, Dr. Ioanna Karellou, & Dr. Spyros Tzanavaris

Scientific Director: Dr. Spyros Tzanavaris, Department of Archives, Library Science and Museology, Ionian University

Solomos Museum: Periklis Pagkratis - Chair, Nafsika Maria Fronimou - Curator

The following versions have preceded:

- GAS Group (T. Korovilou, G. Papaioannou, & S. Tzanavaris, 2024). *Sensory guide to the Solomos Museum for visitors on the autism spectrum*. Version 1.5.



CC BY-NC-ND 4.0 International: Re-use of the work is allowed with reference to the author and the rights to the depicted monuments. Commercial use of the work and the creation of derivatives is not permitted. 2019-2025

Solomos Museum

Corfiot Studies Society

CC BY-NC-ND 4.0 GAS Group – Guides to cultural sites for visitors on the Autism Spectrum 2025