



Sensory guide of the Solomos Museum for visitors on the autism spectrum



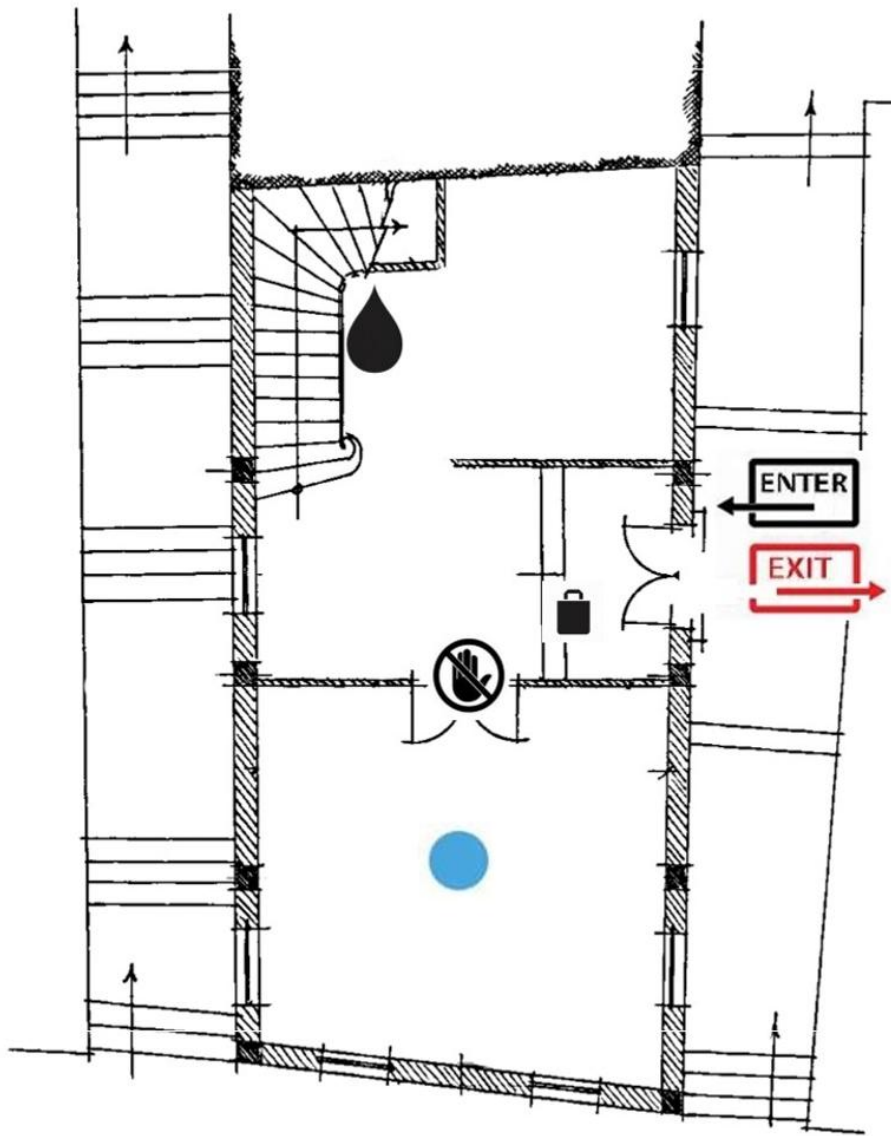
The sensory Guide for visitors on the Autism Spectrum (GAS) for the Solomos Museum was created by the GAS Group - Department of Archives, Library Science and Museology of the Ionian University, in collaboration with the Solomos Museum Corfu

Before I start, I remember there are rules in the Museum:


- ✓ I look at the exhibits inside and outside the showcases from a distance without touching. This way everything remains clean and, above all, safe.
- ✓ During the visit I stay close to those who accompany me.
- ✓ I walk slowly and I am careful with my movements.
- ✓ I speak in a low voice. I can also use my inner voice.

I remember the rules so everyone is happy!

Ground floor



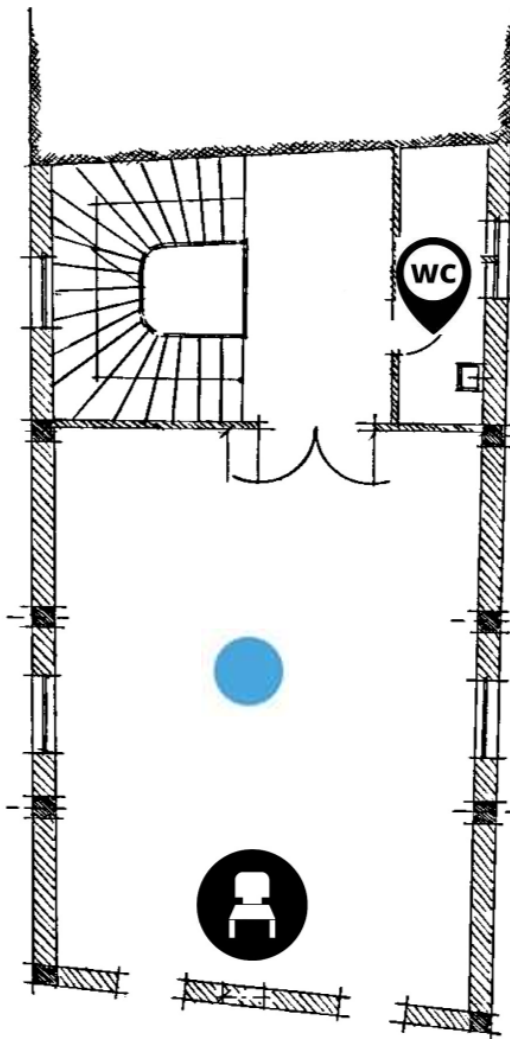
 Low sensory area

 No entrance

 Drinking water

 Shop

1st floor



Low sensory area

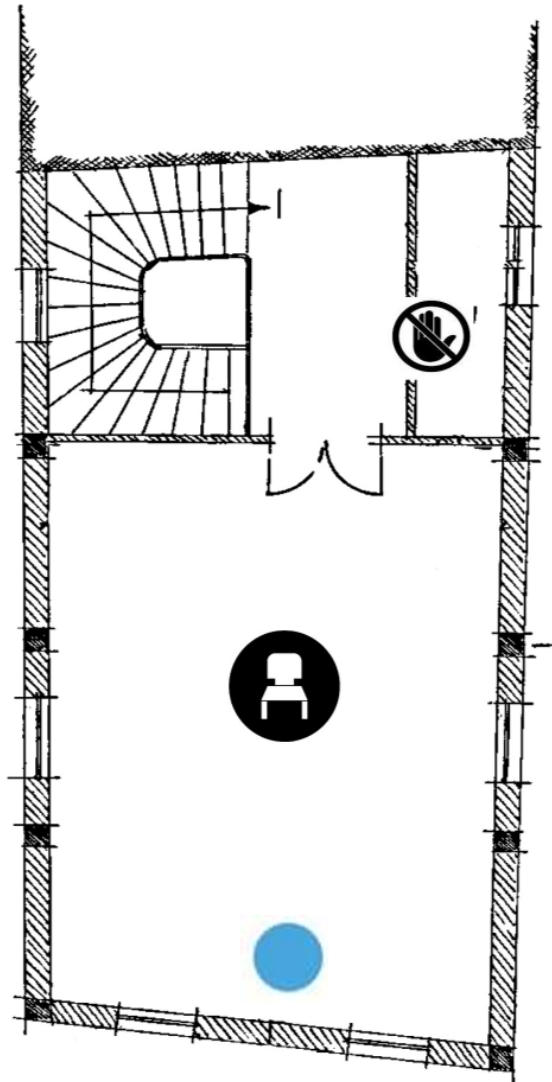


W.C.



Rest area

2nd floor



Low sensory area



No entrance



Rest area



GAS

Guide for visitors on the Autism Spectrum

Copyright GAS Group (2024). *Sensory guide of the Solomos Museum for visitors on the autism spectrum*. Version 1.0.



GAS Group: Theodora Korovilou Msc, Gerasimos Papaioannou, Dr. Spyros Tzanavaris
Scientific Director: Dr. Spyros Tzanavaris, Department of Archives, Library Science and Museology, Ionian University
Solomos Museum Corfu: Periklis Pagkratis - Chair, Nafsika Maria Fronimou - Curator

The following versions have preceded:

-



CC BY-NC-ND 4.0 International: Re-use of the work is allowed with reference to the author and the rights to the depicted monuments. Commercial use of the work and the creation of derivatives is not permitted.